

# UDS

**CSM**  
EST 1967

## *UDS 232 Forestry Excavator*



### **UDS 232**

Multi-purpose telescopic excavator  
and lifting machine in 1

**Economical Harvesting  
High Reliability and easy of use  
Versatility  
High efficiency in the forest**



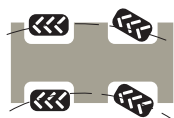
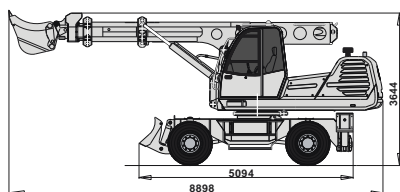
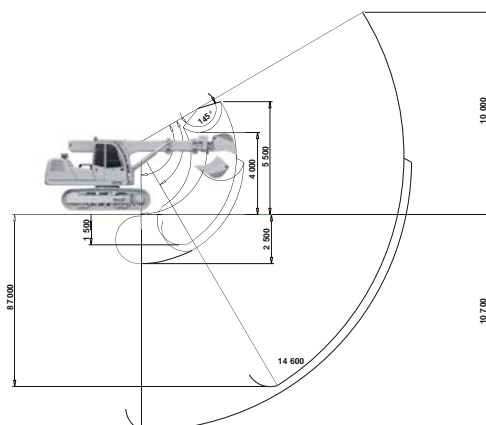
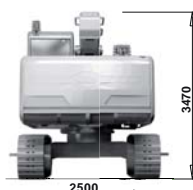
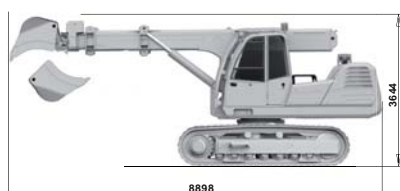




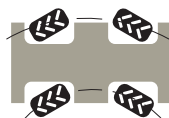
# UDS 232

The multi-purpose finishing machine on wheel chassis or caterpillar chassis with perfect mobility and travel both on the road and in the field. With harvester combination it's perfect for any forestry work. Thanks to the additional equipment - Woody 50 Harvester, the UDS 232 - Forestry is designed to work in the forest during the whole year.

**Engine:** JohnDeere 4045 HF C04 93kW with 2200 RPM EU STAGE4  
**Max. transport speed:** 25 km/h  
**Max. horizontal reach:** 14,6 m  
**Depth reach:** 6,6 m  
**Weight:** 18 000 kg



2 steering wheels



4 steering wheels



crab steering



# Main advantages

- › Machine versatility
- › Long working range
- › Deep undercut up to 90°
- › Performance Harvester



## › Crab walk

The chassis is specially designed for the UDS-232.4. It is a four-wheel type 4WD 2WS, with hydrostatic drive and stabilization.

## › Versatility

UDS excavator-harvester may be used the whole year regardless the cutting season.

It may be used as a:

**Harvester** - for felling, delimbing and crosscutting trees

**Processor** - for delimbing and crosscutting (in tree-length and full-tree operations)

**Loader** - with mounted lifting hook

**Excavator** - by mounting a grapple on it can be transformed to usual excavator - for digging operations, road construction and maintenance

## › High working efficiency in the forest

UDS Excavator - harvester is a powerful machine for clearcuttings

Big trees can be harvested with crawler excavator - harvesters

**UDS Excavator - harvesters have better mobility on swampy and steep areas.**

The cabin of the excavator can turn 360 degrees giving the possibility to the operator to harvest all around the machine.

The harvester head may be mounted in several ways on the excavator: using quick coupling, boom link, nose adaptor, telescopic boom, boom stick with bucket







## Harvester compared with other machines:

### SPECIAL ARRANGEMENT OF THE DELIMBING KNIVES

Because of the special arrangement of the delimbing knives, it is possible to pass leaf trees, which are many times crooked, without problems.

### UPWARDS FOLDABLE ADVANCING UNIT

The upwards foldable advancing unit of the WOODY allows the grapple to take up more trunks lying next to each other for manipulation. Therefore a fully functional loading grapple with wide opening and endless rotation of the WOODY is available.

## Harvester Woody 50

Max. felling diameter	55 cm
Max. delimbing diameter	7 - 50 cm
Max. opening distance of the grapple	95 cm
Delimb feed strength	24 - 30 kN
Movement speed	0 - 5 m/sec.
Recommended engine power	120 HP
Hydraulic system	300 - 350 bar; 180 l/min
Bar saw feed rate	40 m/sec.

CSM Industry s.r.o.  
Daxnerova 756  
Tisovec  
980 61  
Slovak Republic



+421 (0) 475 494 400  
sales@uds.sk  
**www.uds.sk**